

CITIZEN PARTICIPATION PLAN

FOR THE

K - WILLIAMSBURG WORKS SITE

**2 and 20 North 12th Street, 35 and 50 Kent Avenue
Brooklyn, Kings County, NY**

Prepared by

National Grid

June 2025

Table of Contents

1.0	Introduction.....	3
2.0	Basic Site Information	4
3.0	Remedial Program Overview.....	6
3.1	New York State Remedial Program Overview	6
3.2	Project Area Investigation and Remediation History	7
3.3	Remedial Investigation Findings	8
3.4	Interim Remedial Measures	9
4.0	Citizen Participation Activities	10
4.1	Goals and Objectives	10
4.2	Tools and Methods.....	12
4.2.1	Document Repositories	12
4.2.2	Meetings, Meeting Fact Sheets and Comment Period	13
4.2.3	Responsiveness Summary.....	14
4.2.4	Information Newsletters.....	14
4.2.5	Telephone Hotline	14
4.2.6	Website.....	15
4.3	Roles and Responsibilities	15
4.4	Schedule for Implementing Elements of the CPP.....	15
5.0	SUMMARY.....	16

List of Figures

1	Site Location Map.....	5
---	------------------------	---

List of Appendices

Glossary of Key Citizen Participation Terms and Major Program Elements	A
---	---

Identification of Document Repositories	B
---	---

Identification of Affected and/or Interested Parties.....C

Identification of Project Management ContactsD

1.0 INTRODUCTION

By way of an Order on Consent (Order), The Brooklyn Union Gas Company d/b/a National Grid NY (National Grid), while preserving its rights to seek reimbursement from any responsible parties, has agreed to complete delineation of the nature and extent of the contamination at, and emanating from, the K - Williamsburg Works site, site #224055, which is approximately 5.5 acres in area and consists of the following properties in Brooklyn, Kings County, New York (the Site).

Tax Map/Parcel No.	Address
Block 2287 Lot 1	50 Kent Avenue (aka 41 North 11 th Street), Brooklyn, NY
Block 2287, Lot 16,	20 North 12th Street, Brooklyn, NY
Block 2287, Lot 30	2 North 12th Street, Brooklyn, NY
Block 2288, Lot 1,	35 Kent Avenue, Brooklyn, NY

Citizen participation is an integral component of remedial programs in New York State. Input from affected or interested individuals and organizations on the remedial program helps ensure outcomes that account for both technical and human concerns for protecting public health and the environment. A project-specific plan is needed to inform and involve community residents, public and private leaders, and other stakeholders. This Citizen Participation Plan (CPP) documents the planned project-specific public outreach activities and resources organized for the remedial program associated with the Site, which is a former Manufactured Gas Plant (MGP) site. Appendix A contains a Glossary of Key Citizen Participation Terms and Major Program Elements.

The primary purpose of this CPP is to outline a variety of communication methods that, based on applicable New York State law and New York State Department of Environmental Conservation (NYSDEC) regulations and guidance, provide for constructive communication of program activities between the stakeholders and other interested parties. This CPP includes methods intended to inform interested parties of program developments, elicit responses and public

involvement, and provide a central point of contact for inquiries regarding the remedial program for the Site project. Given this context, this CPP presents the planned communication and outreach activities, describes how interested individuals and groups can participate in the remedial program, and provides a variety of reference materials to facilitate gaining access to project-specific information and management personnel.

Both the NYSDEC and National Grid are committed to the implementation of this CPP as required by Title 6 of the New York Code of Rules and Regulations (NYCRR) Part 375, applicable NYSDEC guidance (*e.g.*, Citizen Participation in New York's Hazardous Waste Site Remediation Program: A Guidebook, dated June 1998), the Order, and the state-wide Inactive Hazardous Waste Site Citizen Participation Plan (NYSDEC, 1988). As required by 6 NYCRR Part 375-1.10, NYSDEC and National Grid will review and update this CPP to account for significant changes in the Williamsburg Project's remedial program.

2.0 BASIC SITE INFORMATION

The Site is located at the intersections of Kent Avenue and North 11th and 12th Streets, in the Williamsburg neighborhood of Brooklyn, Kings County, NY (see Figure 1 - Site Location Map). The site was subdivided and sold to third parties in the years following decommissioning and is now comprised of four properties (2 and 20 North 12th Street and 35 and 50 Kent Avenue). Three of the four parcels are contiguous and bordered by the East River, North 11th and North 12th Streets and Kent Avenue. The fourth parcel, 35 Kent Avenue, is located on the southeast side of Kent Avenue between North 11th and North 12th Streets. Three of the Site properties are owned by the City of New York, one by a private party. Additional information of affected and/or interested parties can be found in Appendix C.

History and Operations

The Williamsburg Gas Light Company was incorporated in 1850 and is the first known operator of the Williamsburg Works. The Works' gas production facilities were isolated to the 2 North 12th Street and 20 North 12th Street, and 50 Kent Avenue/41 North 11th Street properties and originally consisted of coal gas production facilities including a retort house, an engine room, a meter house, and a condenser house. Gas storage and purification facilities included three gas holders, a governor house, a purifying house, two

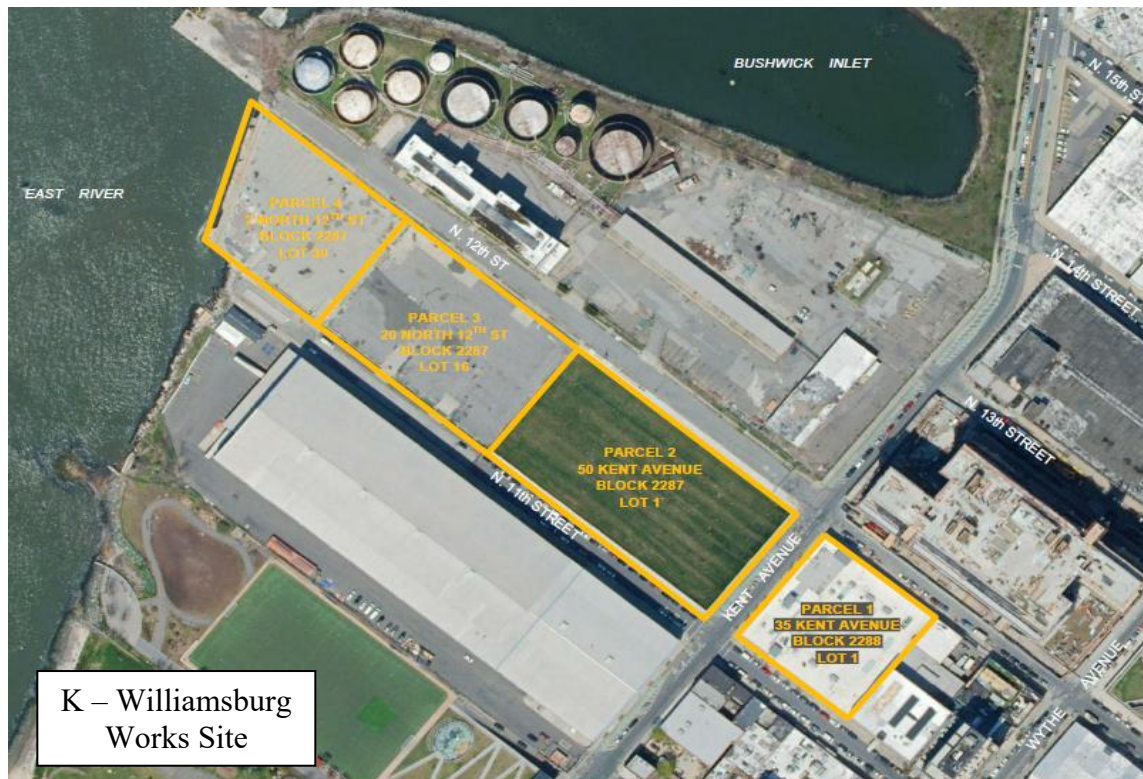
tar tanks, scrubbers and lime houses.

The gas manufacturing process involved heating coal and petroleum products to produce a flammable gas that was used in much the same way that natural gas is used today. Substantial amounts of coal tar were produced as a byproduct, and some of that tar leaked into subsurface soils, where it remains today. The coal tar, along with associated groundwater and soil-vapor impacts, is the principal source of concern at the Site.

Current Site Description

The Site has been subdivided and presently has two uses, a photography studio and a city park. Adjoining properties were heavily industrialized and have been the subjects of previous spill reports and environmental assessments. The data from these reports and assessments, as available, is being incorporated into the Remedial Investigation.

Figure 1
Site Location Map



3.0 REMEDIAL PROGRAM OVERVIEW

3.1 New York State Remedial Program Overview

The NYSDEC's mission to promote and regulate environmental cleanup and safe brownfield redevelopment is accomplished through programs of the Division of Environmental Remediation. DEC's remediation and enforcement initiatives, such as its State Superfund and brownfield programs ensure the timely and efficient cleanup and redevelopment of contaminated properties. The State Superfund Program is an enforcement program whose goal to identify and characterize suspected inactive hazardous waste disposal sites and to ensure that those sites which pose a significant threat to public health or the environment are properly addressed.

New York's State Superfund Program (SSF) identifies and characterizes suspected inactive hazardous waste disposal sites. Sites that pose a significant threat to public health or the environment, such as the site identified above, undergo a process of investigation, evaluation, cleanup, and monitoring. The New York State Department of Environmental Conservation (NYSDEC) administers the SSF Program with assistance and input from the New York State Department of Health (NYSDOH). When the parties responsible for the contamination of the site are known ("responsible parties"), they often pay for or perform the investigation and evaluation of cleanup options under an enforceable consent order. At sites where responsible parties cannot be found or are unable or unwilling to fund an investigation, the State pays for the investigation and may try to recover costs from a responsible party after the investigation and cleanup are complete.

The SSF program contains investigation and cleanup requirements, ensuring that cleanups protect public health and the environment. For more information about the SSF program, go online at: <http://www.dec.ny.gov/chemical/8439.html> or contact any of the State representatives listed in Appendix D.

3.2 Project Area Investigation and Remediation History

The Site and adjoining properties have been the subjects of previous spill reports and environmental assessments. The following narrative provides a summary of the available project records to document key milestones for the Site.

The 50 Kent Avenue property was previously leased and operated by the New York City Department of Sanitation (NYCDOS). There were at least three spill numbers (9401167, 9600011, and 9607376) and a petroleum bulk storage site number (2-456098) associated with the NYCDOS operations. Multiple investigations were completed at 50 Kent Avenue during the time NYCDOS operated it. VOCs, heavy metals, and free phase diesel fuel were observed during these investigations. During the investigations and/or subsequent removal actions contaminated fluids were removed from wells on the property. In 2004, an area around a well with free product was excavated.

Site Investigation (SI) and Cost to Cure Reports were prepared for the New York City Department of Design and Construction (NYCDDC) in 2006 and 2007, respectively, in preparation for developing the park. These reports describe impacts by alleged responsible parties including: former petroleum distillery operations, known and unknown off-site historic petroleum releases, former USTs, including the one closed in place, the former MGP operations, and off-site industrial operations located along the East River. These reports also describe conceptual plans for the park and provide potential remedial cost estimates.

In February 2007, National Grid entered into Order on Consent and Administrative Settlement, Index # A2-0552-0606, with the New York State Department of Environmental Conservation (NYSDEC) to investigate and remediate Manufactured Gas Plant (MGP) wastes associated with several sites in Kings, Queens, Nassau, and Suffolk counties, New York (the Multi-Site Order). The former Williamsburg Works was added to the Multi-Site Order in August of 2007.

While the Site was under the Multi-Site Order, a remedial investigation (RI) was performed (2009-2012 RI), and a RI Report was submitted to NYSDEC in January 2015 (2015 RI Report). RI field work was conducted on behalf of National Grid for the Site from June 2009 through December 2012. At their request, an interim data deliverable was submitted to NYSDEC in August 2010, and in September 2010 NYSDEC responded with a letter requesting that an

excavation/stabilization-based IRM be performed at “the 50 Kent Ave. parcel (bounded by Citi Storage [Block 2278, Lot 16], N. 12th St., Kent Ave., and N. 11th St.).”

In August 2011, NYSDEC approved the IRM Design Work Plan. The IRM Design Work Plan was implemented between January 2012 and June 2015. A NAPL Recovery Plan was submitted to NYSDEC in October 2014. Thirteen NAPL recovery wells were installed as part of IRM activities and NAPL is recovered on a weekly basis from wells where NAPL has collected in the sumps. The IRM 100% Design Report (Design Report) was submitted to NYSDEC in June 2015 and approved in August 2015. The IRM was conducted from November 2015 through June 2017.

In November 2016, National Grid exercised its unilateral right to terminate the Williamsburg Works site from the Multi-Site Order. NYSDEC disputed the termination. In November 2017, a stipulation and order of settlement and discontinuance resolved the disputed termination in favor of National Grid. See *The Brooklyn Union Gas Company v. New York State Department of Environmental Conservation*, Supreme Court of the State of New York, County of Albany, Index No. 903754-17.

3.3 Remedial Investigation Findings

Once completed, the RI will define the overall vertical extent of MGP impacts at the Site. RI work conducted to date has indicated that some MGP-related impacts are commingled with petroleum-impacted soil and fill. Petroleum impacts are likely associated with multiple sources. The presence of additional non-MGP related chemicals including metals, solvents, pesticides, polychlorinated biphenyls (PCBs), and Per- and Polyfluoroalkyl Substances (PFAS) in soils on and adjacent to the Site further confirm the presence and comingling of multiple sources of impacts.

Groundwater flows to the northwest toward the East River during both high and low tides. Groundwater moving through the soil impacts related to the MGP and non-MGP sources likely results in dissolved-phase benzene, toluene, ethylbenzene, xylene (BTEX) and low molecular weight polycyclic aromatic hydrocarbon (PAH) discharge to the East River. Any dissolved phase contaminants that may enter the East River are likely to be mitigated rapidly by processes of

biodegradation, volatilization, and dilution. There are no drinking water wells within a quarter mile of the Site.

The nature and extent of impacts has been adequately evaluated for 50 Kent Avenue (aka Parcel 2). The initial field work associated with the RI at 2 and 20 N. 12th Street (aka Parcels 3 & 4) was completed in November 2022 and a revised draft RI report was submitted to the NYSDEC and NYSDOH on October 31, 2023. Based on NYSDEC and NYSDOH comments to the draft RI report, a Supplemental Remedial Investigation (SRI) work plan was developed to address intermediate and deep groundwater conditions at Parcels 3 & 4. Between July and September 2024, 16 additional monitoring wells were installed and sampled on Parcels 3&4. The draft RI report was updated with the results of the SRI and was resubmitted to NYSDEC and NYSDOH on December 19, 2024. National Grid is currently evaluating or addressing revised draft RI Report comments received from the NYSDEC and NYSDOH on June 3, 2025.

Parcel 1 Remedial Investigation

A Supplemental Remedial Investigation is anticipated at Parcel 1.

Parcel 5 Remedial Investigation

A Supplemental Remedial Investigation is anticipated at Parcel 5.

Parcel 6 Remedial Investigation

Parcel 6 Supplemental Remedial Investigation field work began in June 2025 and included the installation of nine soil borings that were completed as groundwater monitoring wells, and groundwater samples will be collected in late June/early July 2025. Community Air Monitoring was conducted during invasive activities.

3.4 Interim Remedial Measures

IRMs were conducted at 50 Kent Avenue in accordance with the NAPL Recovery Well Work Plan dated October 2013, as approved by NYSDEC, and the IRM 100% Design Report

dated June 2015, as approved by NYSDEC. The NAPL recovery well IRM was performed in 2014 with NAPL recovery continuing to the present, and from November 2015 through June 2017, an excavation/stabilization-based IRM was performed. The NAPL recovery well IRM Construction Completion Report (CCR) was submitted to NYSDEC in December 2014 and approved by NYSDEC on September 8, 2015. The excavation/stabilization-based IRM CCR was submitted to NYSDEC in January 2018 and approved, as it pertained to the work completed at the 50 Kent Avenue Parcel, by NYSDEC, on March 28, 2018.

4.0 CITIZEN PARTICIPATION ACTIVITIES

This section presents the specific citizen participation and outreach activities planned for implementation during the remedial program and to be implemented in accordance with 6 NYCRR Part 375. Operating under project-specific citizen participation goals, clearly defined objectives will be achieved by implementing a range of communication tools and methods. The planned activities are geared toward making project-specific information (*e.g.*, work plans, technical reports, information sheet summaries) available to the public; facilitating communication among stakeholders, including the creation of contact lists; scheduling and conducting Public Meetings; establishing comment periods; and notifying the public of document availability, Public Meetings, comment periods, and major program milestones.

4.1 Goals and Objectives

The central goal of this CPP is to achieve effective, open communication among stakeholders and interested parties, National Grid, and the NYSDEC. Common goals include:

- Communicate program goals and major milestones, actions, and outcomes;
- Inform citizens and others of ongoing project activities and project status and progress;
- Provide citizens (and all stakeholders) a forum for input and comment; and
- Engender a public understanding of constituents of interest, their potential effects on human health and the environment, and appropriate responses to mitigate those effects.

In order to accomplish these goals, the following specific objectives will be pursued through the implementation of this CPP:

- Consistently communicate goals, accomplishments, and status of the project to the contact list (including community leaders, public officials, and the wider community, as necessary) through appropriate means;
- Establish, maintain, update and utilize the contact lists;
- Educate the community, in lay terms, about the nature and magnitude of potential site risks, including instructions for mitigating risk (if appropriate) and assurances that the environment and worker/public health and safety are protected;
- Provide interested parties the opportunity to review and comment on technical reports generated through the remedial program (*e.g.*, public comment periods and document repository as required by 6 NYCRR Part 375);
- Provide interested parties the opportunity to present opinions and ideas during the remedial program (*e.g.*, conduct Public Meeting/comment period and availability session as required by 6 NYCRR Part 375);
- Provide responses to public review and comment (*e.g.*, prepare a responsiveness summary as required by 6 NYCRR Part 375);
- Provide the news media with interviews of National Grid authorized spokespersons, as available, or press releases, to ensure accurate coverage of remedial program activities;
- Provide a designated project spokesperson as point of contact through which community inquiries regarding the project can be addressed consistently and effectively; and
- Periodically review the effectiveness of the citizen participation and outreach activities during the remedial program and adjust this CPP's methods and/or activities, if necessary.

The community contact list is provided in Appendix C and the Williamsburg MGP Site project management or community relations representative contacts (NYSDEC, NYSDOH and National Grid representatives) are provided in Appendix D.

4.2 Tools and Methods

There are many ways to reach and communicate with the community and other interested parties as this CPP is implemented over the course of the remedial program. A variety of outreach tools and methods will be used to ensure proper communication with the interested parties that include various organizations, public and business leaders, and a diverse assemblage of individuals of all ages, education backgrounds, and cultures.

Interested parties will be informed and invited to participate in the planned citizen participation activities through appropriate means such as mailings to the contact list, legal notice in newspapers, press releases, information sheets, and other documents made available in the document repository.

The following specific public participation activities will be implemented as required by 6 NYCRR Part 375 and current NYSDEC guidance.

4.2.1 Document Repositories

The current document repositories for the project are the project website, www.williamsburgmgpsite.com and the NYSDEC Central Office (information below):

NYSDEC Central Office
625 Broadway, 12th Floor
Albany, NY 12233-7016
Attn: Richard Mustico
518-402-9747

In addition, the following repositories were previously established for hard copies of documents and will only be used in the future if requested by NYSDEC:

Brooklyn Community Board #1

Dealice Fuller, Chairperson
435 Graham Avenue
Brooklyn, NY 11211
718-389-0009
<https://www1.nyc.gov/site/brooklyn-cb1/index.page>

Greenpoint Branch

Brooklyn Public Library

107 Norman Avenue

Brooklyn, NY 11222

Telephone: 718-302-3485

Digital Resources:

<https://www.bklynlibrary.org/locations/greenpoint>

The following documents, as available, will be placed in the Repositories:

- Administrative Order on Consent
- Citizen Participation Plan
- Fact Sheet Announcing the Start of the Remedial Investigation
- Remedial Investigation Work Plan
- Remedial Investigation Report
- Reports of any Interim Remedial Measures
- Alternatives Analysis Report
- Proposed Remedial Action Plan
- Record of Decision (ROD)
- Remedial Design
- Post-Remedial O&M Plan
- Other Materials (e.g., Information Sheets, Notices, etc.)

4.2.2 Meetings, Meeting Fact Sheets and Comment Period

After completion of the RI a Public Meeting will be held to discuss its findings. After the Alternatives Analysis Report is completed, the preferred remedy for the Site will be presented in a draft Decision Document and will be subject to public review and comment at a Public Meeting. Fact Sheets announcing the meetings and summarizing the documents will be prepared and disseminated to interested parties and the community. During the post-RI Public Meeting, NYSDEC, NYSDOH and National Grid project managers will summarize the findings of the RI Report and of any IRMs completed to date, and answer questions regarding project area

characterization, data, and activities. At the Public Meeting, remedial alternatives presented in the Alternatives Analysis, the preferred remedy presented in the Proposed Decision Document, costs, implementation schedules, and criteria used in evaluating the preferred remedy will be discussed. A 30-day public comment period will commence after the NYSDEC releases the draft Decision Document. After the public comment period ends, NYSDEC and NYSDOH will review all public comments from the Public Meeting and those submitted during the public comment period and, where applicable, incorporate the comments into the Remedial Action Program.

Fact Sheets will be distributed to the interested parties and proximate community at the beginning of the Remedial Investigation, the acceptance of the RI Report (including announcement of Public Meeting) and the announcement of the proposed Decision Document (also including announcement of the Public Meeting).

4.2.3 Responsiveness Summary

Public questions, comments and concerns voiced during the Public Meeting and collected during the comment period after the PRAP meeting will be addressed by the NYSDEC and published in the Remedial Action Program's Responsiveness Summary. Agency responses are to address both the broad general concerns and the significant questions communicated by the interested parties.

4.2.4 Information Newsletters/Fact Sheets

Information Newsletters/Fact Sheets will be distributed to the contact list to announce major project milestones and accomplishments throughout the remedial program. Written in lay terms, information newsletters will describe and summarize the project area's history, review the goals of the project, update the status of project plans and/or results, list opportunities for citizen involvement, list key contacts and list the location of the document repositories.

4.2.5 Telephone Hotline

National Grid has established a Telephone Hotline for the Williamsburg MGP site. The phone number is 718-982-7349. The Hotline can be used at any time to leave questions about the project.

4.2.6 Website

National Grid has established a website, www.williamsburgmgpsite.com, at which interested parties can find information about the MGP site, MGP operations and their environmental impacts and the NYSDEC's MGP program. Updates will be provided as warranted and electronic copies of major documents associated with that program will be posted.

4.3 **Roles and Responsibilities**

The specific roles and associated responsibilities for implementing this CPP are:

- NYSDEC Remedial Project Manager - The NYSDEC Project Manager is responsible for enforcement, oversight and management of the overall remedial program. Typical citizen participation-related activities include making presentations at Public Meetings, reviewing project documents such as Fact Sheets and providing technical assistance in preparing the responsiveness summary or answering public inquiries.
- NYSDEC Citizen Participation Specialist - The Citizen Participation Specialist assists the project managers in implementing the CPP. Typical activities include preparation and/or review of information sheets and the responsiveness summary and coordination of Public Meetings and availability sessions.
- National Grid Project Manager - The National Grid Project Manager, in cooperation with the NYSDEC Project Manager, is responsible for implementing the overall remedial program at the Site. Typical citizen participation-related activities include management of CPP implementation, presentations at Public Meetings and technical assistance to the NYSDEC Project Manager and Citizen Participation Specialist.

4.4 **Schedule for Implementing Elements of the CPP**

Implementing elements of this CPP will depend upon completion by National Grid and final approval by the NYSDEC of various plans and reports required by the Order on Consent governing the Site.

5.0 SUMMARY

Guided by the goals and objectives of this CPP, implementation of the planned public outreach and citizen participation activities will ensure the timely communication of important program information of interest to the local community. Citizen involvement and interaction in the remedial program will be facilitated through specific opportunities such as Public Meetings, public comment periods, availability sessions and use of the Document Repositories. Throughout the remedial program, this CPP and its specific outreach tools and methods will be monitored and, as required and agreed by the NYSDEC and National Grid, will be adjusted to improve its effectiveness in responding to community needs.

Appendix A

GLOSSARY OF KEY CITIZEN PARTICIPATION TERMS AND MAJOR PROGRAM ELEMENTS

Alternatives Analysis (AA) – A document or portion of a remedial work plan, which identifies one or more alternatives and evaluates the effectiveness of each with respect to the criteria. The AA is generally prepared by the remedial party for all sites other than class 2 Inactive Hazardous Waste Disposal Site Registry sites.

Citizen Participation Plan (CPP) - A document that describes the project-specific citizen participation and outreach activities that will take place alongside the technical components of the remedial program. The CPP also provides project information, citizen participation goals and objectives, and lists of contact persons and document repositories.

Citizen Participation Specialist - An NYSDEC staff member whose duty it is to provide guidance and assistance in carrying out the CPP. The Citizen Participation Specialist is the key contact for public inquiries about the project and the remedial activities.

Contact List - A list in the CPP (Appendix C) containing names and addresses of individuals, groups, organizations, news media and public representatives interested and/or affected by the project. The contact list is used to distribute important information and notices about the project and the remedial program.

Document Repository - Project documents and other information are placed in the Document Repository to facilitate convenient public access to these materials. Documents are available for public reference and review at the offices of Community Board 1 in Brooklyn. Refer to Appendix B for more information about the Document Repository location and hours of operation.

Interim Remedial Measure (IRM) - A discrete action which can be conducted at a site relatively quickly to reduce the risk to human health and to the environment from a well-defined waste problem. An IRM can involve cutting and plugging waste conduits, removing contaminated soil and securing a site.

Polycyclic Aromatic Hydrocarbons (PAHs) - Contaminants typically found at MGP sites and associated with coal tar residues.

Remedial Design (RD) - This report will include a detailed description of the remedial objectives and the means by which each essential element of the selected remedial alternative will be implemented to achieve those objectives. It incorporates the findings of the FS Report to provide a design which will be implemented during the performance of the cleanup activities at the site.

Remedial Investigation (RI) - A process to determine the nature and extent of contamination at a site by analyzing data collected from sampling (e.g., water, soil, air, etc.) at a site. Information

gathered throughout the RI is then used to conduct a Alternatives Analysis (AA), which proposes and evaluates various remedial alternatives for the site.

Responsiveness Summary - The Responsiveness Summary is prepared by the NYSDEC to address public comments, questions and concerns regarding the proposed remedial action to be taken at a site. The Responsiveness Summary is issued as part of the Remedial Action Program.

Volatile Aromatic Hydrocarbons - Benzene, Toluene, Ethylbenzene, Xylene (BTEXs) - Volatile aromatic hydrocarbons and are typical contaminants found at MGP sites and other sites where coal, oil, refined products and other hydrocarbons were burned or used.

Appendix B

IDENTIFICATION OF DOCUMENT REPOSITORIES

The current document repositories for the project website and the NYSDEC Central Office (information below):

Williamsburg MGP website:

<http://williamsburgmgpsite.com/>

Brooklyn Community Board #1

Dealice Fuller, Chairperson

435 Graham Avenue

Brooklyn, NY 11211

718-389-0009

<https://www1.nyc.gov/site/brooklyncbl/index.page>

Greenpoint Branch

Brooklyn Public Library

107 Norman Avenue

Brooklyn, NY 11222

Telephone: 718-302-3485

Digital Resources:

https://www.bklynlibrary.org/locations/greenpoint*

*The library also has a link to the project website as part of its online Digital Resources.

NYSDEC Central Office

625 Broadway, 12th Floor

Albany, NY 12233-7016

Attn: Richard Mustico

518-402-9747

Appendix C

IDENTIFICATION OF AFFECTED AND/OR INTERESTED PARTIES

Site Owners:

50 Kent Avenue
AKA 41 North 11th Street
Brooklyn, NY 11211
Owner: NYC Parks and Recreation
16 W 61st Street
New York, NY 10023

Block/Lot: 2287-0001
20 N. 12th Street
AKA 19 North 11th Street
Brooklyn NY 11211
Block/Lot: 2287-0016
Owner: NYC Parks and Recreation
16 W 61st Street
New York, NY 10023

2 North 12th Street
Brooklyn, NY 11211
Block/Lot: 2287-30
Owner: NYC Parks and Recreation
16 W 61st Street
New York, NY 10023

35 Kent Avenue
AKA 47 Kent Ave Brooklyn, NY 11211
Block/Lot: 02288-0001
Owner: North 12th Associates LLC
14 Skillman Street
Roslyn, NY 11576

Interested Parties:

61 North 11th Street
AKA 84-94 N. 12th St
Brooklyn, NY 11211
Block/Lot: 2288-0013
Owner: DM 144 Investors LLC
418 E 59th Street
New York, NY 10022

Government Officials

To find current elected officials, please go to <https://www.usa.gov/elected-officials> and use the address 50 Kent Avenue, Brooklyn, NY 11249.

Brooklyn Borough President

Hon. Antonio Reynoso
Brooklyn Borough Hall
209 Joralemon Street
Brooklyn, NY 11201
<https://www.brooklyn-usa.org/>

City Council Member

Hon. Lincoln Restler
410 Atlantic Avenue
Brooklyn, NY 11217
Phone: 718-875-5200
<https://council.nyc.gov/district-33/>

Congressman

Hon. Nydia Velazquez
266 Broadway
Suite 201
Brooklyn, NY 11211
Phone: (718) 599-3658
<https://velazquez.house.gov/>

Assemblywoman

Hon. Emily Gallagher
685A Manhattan Avenue
Brooklyn, NY 11222
<https://assembly.state.ny.us/mem/Emily-Gallagher/>

State Senator

Hon. Kristen Gonzalez
801 2nd Avenue, Suite #303
New York, NY 10017
Phone: (718) 765-6674
<https://www.nysenate.gov/senators/kristen-gonzalez/district>

Community Groups

Community Board

Brooklyn Community Board #1

Dealice Fuller, Chairperson

435 Graham Avenue

Brooklyn, NY 11211

718-389-0009

<https://www1.nyc.gov/site/brooklyncbl/index.page>

Community Newspapers

Greenpoint Gazette (Brooklyn Daily Eagle)

Raanan Geberer, Managing Editor

597 Manhattan Avenue

Brooklyn, NY 11222

718-422-7410

news@brooklyneagle.com

The Jewish Press

3692 Bedford Avenue

Brooklyn, NY 11229

718-330-1100

www.jewishpress.com

Appendix D

IDENTIFICATION OF PROJECT MANAGEMENT CONTACTS

New York State Department of Environmental Conservation

Richard Mustico
Division of Environmental Remediation
Assistant Engineer (Environmental)
New York State Department of Environmental Conservation
625 Broadway
Albany NY 12233-7014
518-402-9647

New York State Department of Health

Arunesh Ghosh
Public Health Specialist
Bureau of Environmental Exposure Investigation
New York State Department of Health
800-458-1158 ext. 27880
or 518-402-7880

National Grid

April Dubison
SIR Community Affairs
2 Hanson Place
Brooklyn, NY 11217

Williamsburg Project Hotline Telephone – 718-982-7349

Please leave a message on the Hotline and your call will be promptly returned.